



# Update on vegetation clearance works, Calvert

August 2020 | [www.hs2.org.uk](http://www.hs2.org.uk)

High Speed Two (HS2) is the new high speed railway for Britain. We are continually reviewing the works on our construction sites in line with Government and Public Health England (PHE) advice on dealing with COVID-19. The Government's current strategy makes it clear that construction activity can continue as long as it complies with this guidance. Please be assured that only sites that can operate within the guidelines are operational. All sites will remain under constant review. We have postponed all face-to-face engagement events and meetings and have put in place a number of channels to communicate with communities, such as letters and phone calls, as well as updates and alerts from each of the local community websites. You can sign up for regular updates in your local area at [www.hs2inbucksandox.co.uk](http://www.hs2inbucksandox.co.uk)

## What will be doing in your area?

We will be continuing our programme of vegetation clearance work which began in September 2019, which will enable the future construction works for HS2. You may have already seen our teams undertaking various ecology surveys ahead of any work taking place.

The programme of work started in late September 2019 and will continue until April 2021. The location of the works be between Calvert, Steeple Claydon and Twyford, more information is included on the map in this notification.

The vegetation will be removed by arboricultural team using machinery. Where appropriate some sections of vegetation will be replaced with temporary fencing, this will help us keep the site secure ahead of future construction activities.

**If you have a question about HS2 or our works, please contact our HS2 Helpdesk team on 08081 434 434 or email [hs2enquiries@hs2.org.uk](mailto:hs2enquiries@hs2.org.uk)**

### Duration of works

Works continuing until until April 2021.

Normal working hours:

Mon to Fri 8am –6pm

Saturday 8am-1pm

### What to expect

Some additional traffic on local roads.

Noise from machinery used for the works.

Off peak temporary traffic signals when removing roadside vegetation.

Site compounds with 24 hour site security and temporary lighting

### What we will do

Manage the works so as to minimise disturbance.

# Update on vegetation clearance works, Calvert

Notification



[www.hs2.org.uk](http://www.hs2.org.uk)

## What will we be doing in your area continued.

Where the vegetation is adjacent to public roads we may require temporary traffic signals to be in place. These would be during off peak hours only.

Small site compounds will be set up next to work areas. The compounds will include 24hr security, along with temporary lighting.

## What consents do we have to undertake this work?

There have been extensive ecological and tree surveys undertaken across the vegetation identified for clearance. Following this we put together a plan to create new habitats in the area.

Before any vegetation is cleared it will be thoroughly inspected by qualified ecologists. Any protected species found to be present will be recorded and no vegetation will be cleared until the species have left the site. The vegetation clearance will be undertaken in accordance with:

HS2 Organisational European Protected Species Great for Crested Newt Licences WML025. First issued March 2017.

HS2 Organisational European Protected Species Licence for Badger WML024. . First issued February 2018.

Further details are available online.

<https://www.gov.uk/government/publications/hs2-phase-one-environmental-statement-volume-5-ecology>

The work on HS2 is guided by High-Speed Rail (LondonWestMidlands) Act 2017.

<http://www.legislation.gov.uk/ukpga/2017/7/contents/enacted>

## How this might affect you?

We will be working hard to ensure any impact on residents is kept to a minimum during these and all works. You may notice some extra traffic on the roads immediately around the sites with workers moving to and from the site.

You may notice some noise from the machinery while our work is taking place. Our normal working hours are between 8:00am and 6:00pm Monday – Friday and 8:00am – 1:00pm Saturdays. The site will be open an hour either side of these times for the workforce to start up and shut down.

Contact our HS2 Helpdesk team on **08081 434 434**

# Update on vegetation clearance works, Calvert

Notification



[www.hs2.org.uk](http://www.hs2.org.uk)

## Public Rights of Way

Public Rights of Way (footpaths) that cross the work area will be closed for the duration of the works. This will help us keep residents safe from our machinery while the clearance takes place. Any closures will be sign posted and more information will be on [www.hs2inbucksandox.co.uk](http://www.hs2inbucksandox.co.uk)

## Tree Planting

A significant programme of tree planting will take place in the Sheephouse Wood and Decoypond Wood area from mid-November 2019 into the planting season of 2020. We will be planting trees 1.75 - 2.5 metres in height to establish new bat flight path lines within these areas. There will be approximately 75,000 transplant whips and container grown trees and shrubs planted which will be a mixture of native trees and shrub species which complement the current species within the surrounding countryside.

## Why are the works taking place now?

HS2 need to start their main civil works in early 2020. The ecology and vegetation need to be cleared ahead of this and due to the different ecology seasons we need to start this now.

The High-Speed Rail (London - West Midlands) Act 2017 includes Environmental Minimum Requirements and a Code of Construction Practice which sets out how we undertake our construction activities. This includes analysis of existing ecology and explains how we will mitigate this during our construction.

Substantial ecological survey works have taken place in this area since 2012 as part of the Environmental Statement. Due to the validity of the results, we're required to resurvey every two years. These surveys have provided a detailed understanding of the ecology in the area and allowed us to develop mitigation plans for translocation of the ecology and removing vegetation.

# Update on vegetation clearance works, Calvert

Notification



[www.hs2.org.uk](http://www.hs2.org.uk)

## How will you ensure that you do not affect nesting birds and other protected and non-protected ecology?

Following local feedback this work has been planned to take place after the bird nesting season. Prior to any vegetation removal, an ecologist will survey the area to be cleared for ecology and record any findings.

The findings from these surveys, along with data from surveys from the previous five years, are used to identify those areas that can be cleared and those which cannot yet, due to the presence of protected ecology.

Any vegetation that cannot be removed due to the presence of protected ecology will be left until further surveys confirm that the ecology is no longer present.

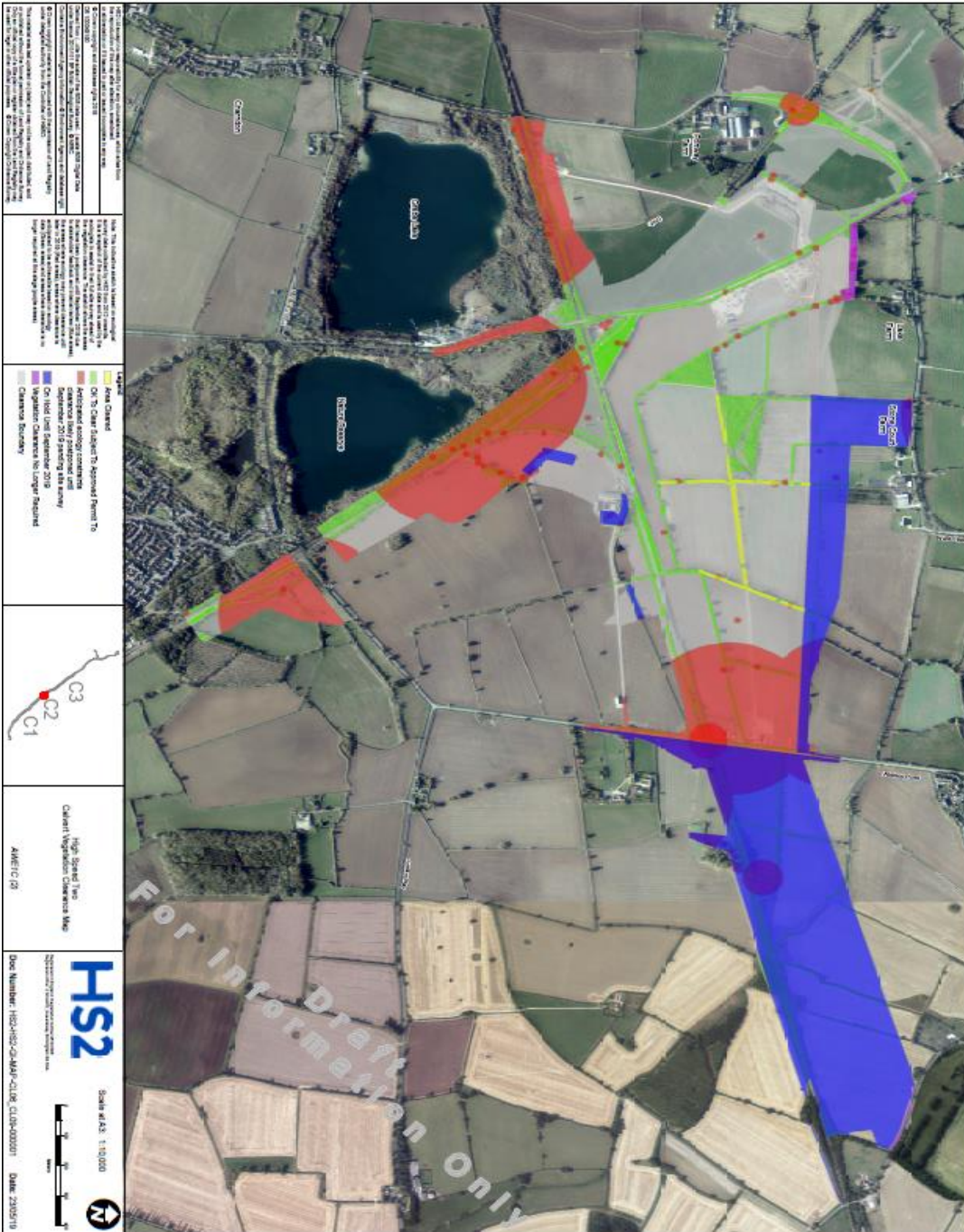
# Update on vegetation clearance works, Calvert

Notification



[www.hs2.org.uk](http://www.hs2.org.uk)

Map of the clearance work



Contact our HS2 Helpdesk team on [08081 434 434](tel:08081434434)

# Keeping you informed

We are committed to keeping you informed about work on HS2. This includes ensuring you know what to expect and when to expect it, as well as how we can help.

## Residents' Charter and Commissioner

The Residents' Charter is our promise to communicate as clearly as we possibly can with people who live along or near the HS2 route. [www.gov.uk/government/publications/hs2-residents-charter](http://www.gov.uk/government/publications/hs2-residents-charter)

We also have an independent Residents' Commissioner whose job is to make sure we keep to the promises we make in the Charter and to keep it under constant review. Find reports at: [www.gov.uk/government/collections/hs2-ltd-residents-commissioner](http://www.gov.uk/government/collections/hs2-ltd-residents-commissioner)

You can contact the Commissioner at: [residentscommissioner@hs2.org.uk](mailto:residentscommissioner@hs2.org.uk)

## Construction Commissioner

The Construction Commissioner's role is to mediate and monitor the way in which HS2 Ltd manages and responds to construction complaints. You can contact the Construction Commissioner by emailing: [complaints@hs2-cc.org.uk](mailto:complaints@hs2-cc.org.uk)

## Property and compensation

You can find out all about HS2 and properties along the line of route by visiting: [www.gov.uk/government/collections/hs2-property](http://www.gov.uk/government/collections/hs2-property)  
Find out if you're eligible for compensation at: [www.gov.uk/claim-compensation-if-affected-by-hs2](http://www.gov.uk/claim-compensation-if-affected-by-hs2)

## Holding us to account

If you are unhappy for any reason you can make a complaint by contacting our HS2 Helpdesk team. For more details on our complaints process, please visit our website: [www.hs2.org.uk/how-to-complain](http://www.hs2.org.uk/how-to-complain)

## Contact Us

Contact our HS2 Helpdesk team all day, every day of the year on:

 Freephone **08081 434 434**

 Minicom **08081 456 472**

 Email **[hs2enquiries@hs2.org.uk](mailto:hs2enquiries@hs2.org.uk)**

Write to:

**FREEPOST**

**HS2 Community Engagement**

Website **[www.hs2.org.uk](http://www.hs2.org.uk)**

To keep up to date with what is happening in your local area, visit: **[www.hs2inyourarea.co.uk](http://www.hs2inyourarea.co.uk)**

**Please contact us if you'd like a free copy of this document in large print, Braille, audio or easy read. You can also contact us for help and information in a different language.**

HS2 Ltd is committed to protecting personal information. If you wish to know more about how we use your personal information please see our Privacy Notice <https://www.gov.uk/government/publications/high-speed-two-ltd-privacy-notice>

**Reference number: FUS\_AWN\_0106**

**HS2-EW-FUS-Ph1-Ar-Ce-C2-Prog-works-37-24/08/2020**

High Speed Two (HS2) Limited, registered in England and Wales.

Registered office: Two Snowhill, Snow Hill Queensway, Birmingham B4 6GA.

Company registration number: 06791686. VAT registration number: 888 8512 56.